

Before The Installation

- Uses Microsoft DirectX 5 video and audio drivers. It is important that you check with your audio and video card manufacturer to determine if your hardware will support DirectX. Please see the [DirectX 5](#) section in this file for more information.
- Should not be installed to a compressed drive.
- Please make sure your computer system is 100% Windows 95-compatible; *NetStorm* for Windows 95 is not compatible with Windows 3.1X or Windows NT.
- To operate best, *NetStorm* requires that your system have the latest Windows 95 32-bit drivers for your CD-ROM drive, sound, and video card. If you have any problems running the program, outdated drivers are the most likely cause.
- If you need help obtaining the latest sound and video drivers, check out the [Vendor List](#).

Can I listen to the game soundtrack on my audio CD player?

No. The music files are actually .wav files, but they have been renamed as ".mus" files. Standard audio CD players do not recognize either of these formats.

Can I run the game without the CD in the drive?

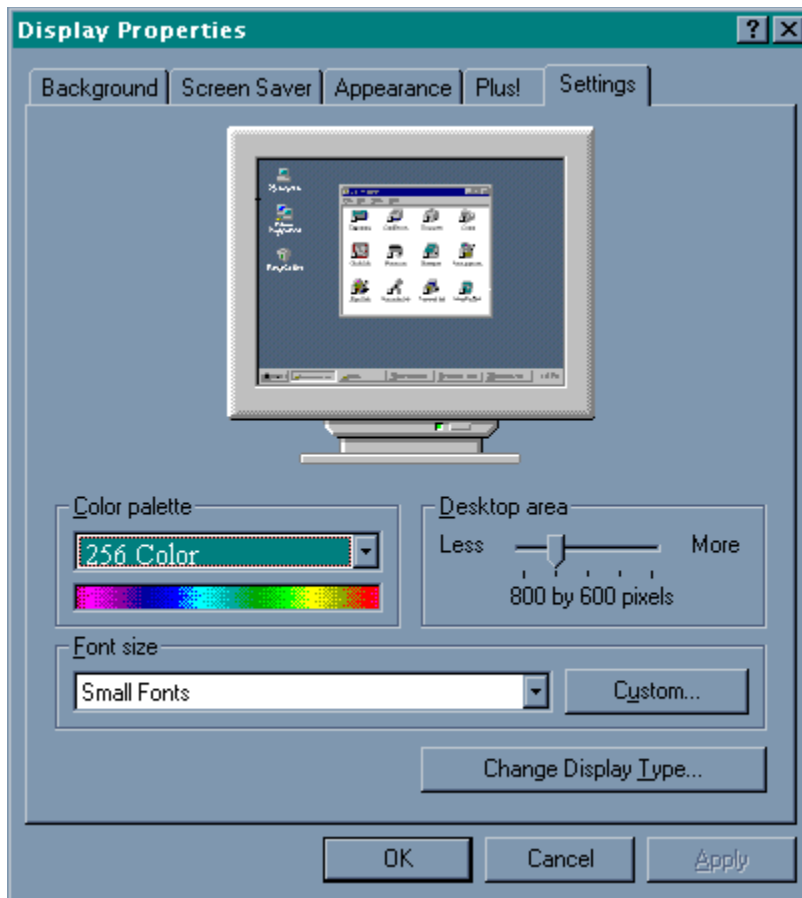
1. Single Player, Minimum install: Must have the CD.
2. Single Player, Maximum install: Must have the CD.
3. Multiplayer, Minimum install: Must have the CD.
4. Multiplayer, Maximum install: Must have one CD for every two players.

Color Settings

This game utilizes the DirectDraw libraries of Microsoft's DirectX. Some video cards do not yet have driver support for DirectDraw. Updated drivers are being developed by manufacturers to remedy this. To obtain information on these updates, contact your [Video Card Manufacturer](#) and download their latest Windows 95 drivers for your video card. If you are not sure about your video card or its capabilities, please refer to the section called [Check Your Display Type Settings](#) for more information, or contact your [Video Card Manufacturer](#).

To Change Your Color Setting:

You need to change the **Color palette** box of the window shown below to at least 256 Color. To go to the Display Properties window to change it, [click here](#).



If you choose to make this change at some other time, you can always return to this Help file and try again, or follow the steps listed below to access these settings.

1. Place your mouse cursor over an empty area of your desktop and right-mouse click. At the bottom of the list that appears, click on **Properties**. This will bring up the Display Properties window. You can also open this window by choosing the **Start** button, **Settings**→**Control Panel**, and double-clicking the **Display** icon.

2. Choose the **Settings** tab and change the color setting to 256 Color as shown in the **Color palette** box above.

If you have a video card that supports 256 Color, but you cannot select this as an option, check to see that you have the most updated Windows 95 video driver.

Common Audio Problems

Half of the problems with sound cards are remedied by newer sound card drivers. This is highly recommended and is usually free and easy to do. You can contact your [Sound Card Manufacturer](#) for details.

Game Specific:

[Can I listen to the game soundtrack on my audio CD player?](#)

General:

[Installing a new sound card.](#)

[I just installed a new sound card. How come I'm not getting any sound?](#)

[Checking your sound card for conflicting settings.](#)

[I have only partial or no sound when running the game.](#)

[I have a Diamond Telecommander sound/modem card and it does not work with the game. What do I do?](#)

[I have a Packard Bell with little and/or no sound when playing the game.](#)

[I have an Advanced Gravis UltraSound ACE and I am experiencing severe lock-up problems.](#)

[Why is the sound fuzzy on my Sound Blaster Pro 2 sound card?](#)

Common CD-ROM Problems

If you encounter any CD-ROM drive problems, make sure you have the latest 32-bit CD-ROM drivers installed. Most problems are the result of 16-bit CD-ROM drivers. To see if your computer is using 16-bit drivers, follow these steps:

1. Right mouse click on **MY COMPUTER**.
2. Choose **Properties**.
3. Select the **Performance** tab.

If **File System** does not state "32-bit", then you need to update your CD-ROM drivers. Please contact your **CD-ROM drive manufacturer** for details.

Common Input Device Problems

Game Specific:

100% Windows 95 Microsoft compatible mouse and driver are required when using NetStorm and your mouse. If you are experiencing problems with your mouse and the game, you should contact your mouse manufacturer to obtain the most up to date mouse driver available.

General:

Mouse

Common Tips & Troubleshooting for General Issues

Half of the problems with sound cards and video cards are remedied by newer drivers. This is highly recommended and is usually free and easy to do. You can contact your [Sound Card Manufacturer](#) and/or [Video Card Manufacturer](#) for details.

Game Specific:

[Why does the game sometimes quit to the desktop?](#)

[Can I run NetStorm on Windows 3.1, Windows NT or OS/2?](#)

[Can I run the game without a CD in the drive?](#)

[Can I listen to the game soundtrack on my audio CD player?](#)

[The taskbar hides a portion of the game window. Can I fix this?](#)

General:

[My screen saver runs slowly when the game is running. What can I do about that?](#)

[The fonts on my game screen are too large and extend off the screen. Why is this happening?](#)

[Power Saver Functions](#)

[Ctrl-Alt-Del locks up my system.](#)

[How can I improve performance?](#)

[Where do I go for game updates and/or patches?](#)

Common Troubleshooting Tips

Activision thoroughly tests its games on a variety of systems before they are released, but it is virtually impossible to test on all combinations of software and hardware. Many of the issues you may encounter in Windows 95 are caused by device drivers for video cards, sound cards, and CD-ROM drives that are not fully compatible with the Windows 95 operating system and/or DirectX. The following troubleshooting tips are intended to assist you in solving some of the common issues that occur with the Windows 95 operating system and the game.

Installation - This will focus on basic problems that might occur during the installation process.

DirectX 5 - This will explain the DirectX 5 process and state general answers to frequently asked questions.

Autoplay - This is where to go if you are encountering problems with the title screen automatically appearing.

Video - Where to go if you are encountering video related problems.

Audio - Where to go if you are encountering audio related problems.

CD-ROM - Go here if you are encountering CD-ROM related problems.

Input Devices - Where to go if you are encountering input device related problems (e.g. mouse).

General Issues - Commonly asked questions.

Common Video Card Problems

Half of the problems with video cards are remedied by newer video card drivers. This is highly recommended and is usually free and easy to do. You can contact your Video Card Manufacturer for details. Another consideration when experiencing video corruption is to update your mouse driver. This has seemed to fix many problems with Logitech® and other mice in the past.

Game Specific:

[I have an ATI Mach64 and keep getting errors \(e.g. DIBENG.DLL\). What should I do?](#)

[I am having problems running the game with my STB video card.](#)

[What should I do if I am encountering problems when running Full Screen?](#)

[When I launch into a mission, the screen goes black and freezes.](#)

[Why do I have wavy lines across my screen when I enter a mission?](#)

[How do I set my display for 256 Color?](#)

General:

[The images are very choppy and slow while playing the game.](#)

[I installed a new video card, and the game doesn't look right. What do I do?](#)

[Changing the standard Windows 95 cursors causes video corruption.](#)

[When I launch the game from the title screen or from the taskbar, my screen stays blank and the game doesn't start. What should I do?](#)

[Game graphics are faded and/or strange in appearance.](#)

[The fonts are too large and/or extend off the screen.](#)

Credits

Titanic Entertainment (in alphabetical order):

Tony Bratton, Chief Nerd
Ken Demarest, President and Nerd
Beverly Garland, Art Director
Jim Greer, Director of Mind Control Products
Steve Moore, Father
Chip Patterson, Artist
Kelcey Privett, Artist
Zack Simpson, Chief Executive Nerd

Additional Support From:

Thomas Blom, Video Support
Randy Buck, Voice and Sound Effects
Richard (Dicko) Mather, Conceptual Art
John Miles, Graphic Code
Mark Morgan, Music
Morgan Ogburn, Conceptual Art
Mike Privett, Additional Programming
John King, Voice Talent
Tom Byrne, Voice Talent
Boutros Boutros-Doggie, Security
Activision Production:
Mitch Lasky, Executive Producer
Jonathan Knight, Producer
Jason Kay, Producer
John Cibulski, Production Coordinator
Sandi Isaacs, Localizations

Activision Marketing and Public Relations:

Peter Karpas, Product Manager
Steve Perkins, Assistant Product Manager (Intern)
Kerstine Johnson, Manager of Corporate Communications
Elizabeth Capps, Junior Publicist

Creative Services:

Ron Gould, Creative Director
Veronica Milito, Lead Copywriter
Jim Bridges, Senior Designer

Documentation:

Mark H. Walker, Manual Author
Mike Rivera, Documentation Manager
Belinda M. Van Sickle, Documentation Writer/Production Artist
Ronnie Lane, Technical Help Documentation
Jason Feffer, Technical Help Documentation

Activision Quality Assurance:

Dave Arnsperger, QA Manager
Tim Vanlaw, Senior QA Project Lead
Mitch Goldman, Project Lead
Aaron Casillas, Tester
Christian Campbell, Tester
Michael Brady, Tester
Chris Toft, Tester
Aaron Gray, Tester
Laurent Slutzky, Tester

And lots of other important people who tested the game and helped make it great.

Special Thanks To:

Bill Anker, Napoléon Bonaparte, Tony Bowren, Christian Casparian, Greg Corgain, Scott Culbertson, Sean Dunn, Kelly Egan, Lydia Estrada, Kevin Gliner, Eric Johnson, Brian Kelly, Gary Knight, Bobby Kotick, Maryanne Lataif, Julia Moore, General George Patton, David Petehay, Jean Powell, Pamela Sandige, Wendy Scherdorf, Ron Scott, Michael Tracy, David Vonderhaar, Denise Walsh.

Customer Support

If you have any comments, questions, and/or suggestions about *NetStorm* or any other Activision product, please feel free to contact us. If you are experiencing difficulty, please consult this help file before contacting Customer Support. The help file contains the answers to some of our most frequently asked questions and may quickly provide a solution to your problem. If, after reviewing the *NetStorm* Help file, you are still experiencing problems, please feel free to contact us through any of the services listed. So that we can better help you, please be at your computer and have the following information ready:

1. Complete product title
2. Exact error message reported (if any) and a brief description of the problem
3. Your computer's processor type and speed (e.g. Pentium 90MHz)
4. Video and sound card makes and models (e.g. Diamond Stealth 64 video, Sound Blaster 16 sound...)

Customer Support:

[North America](#)

[UK and Europe](#)

[Australia and Pacific Rim](#)

For Technical Support and Customer Service in areas not listed, please contact your local distributor or Activision via online (please note, online support is in English only).

Please Note: The network portion of this game is supported via our online services only. (available in English only)

Locations for Updates and/or Patches:

[Where do I go for Game Updates and/or Patches?](#)

Customer Support (On-line)

NetStorm Multiplayer technical support is available through our online services only. Due to the complex nature of network games, please provide the following information when requesting technical support for *NetStorm Multiplayer*.

NOTE: Except where noted, the following requested information can usually be found:

In Windows 95: Click on the **Start** button, select **Settings**, then choose **Control Panel**. Double-click on the **System** icon. From this point, click on the **Device Manager** tab.

1. What kind of processor does each machine have (found on the **General** tab)?
2. What kind of video and sound cards do the machines have?
3. Are you using a joystick? If so, what brand and model? What is it using as a game port (e.g. sound card, dedicated game port)?
4. What size install did you use?
5. How much free disk space do you have? (This can be found by opening the **Windows Explorer** and looking at the bottom of the window.)
6. How much RAM is in each machine? (This information can be found by right mouse clicking once on **My Computer** and choosing **Properties**. Click on the **General** tab. RAM will be listed.)
7. Is your Virtual Memory configured manually or was it set by Windows 95? If manually, what are the specifications? (This information can be found by going to the **Performance** tab adjacent to the **Device Manager** tab.)

In addition, please note whether you are using a modem, internet connection, or LAN to play *NetStorm Multiplayer* and have the following information available.

If you are using a modem:

NOTE: In Microsoft Windows 95, your modem settings can be found by opening the **Control Panel**, double-clicking on **Modems**, and examining the **Properties**.

1. What kind of serial chip (i.e. 16550 or 8250) does your modem have? You can find out by running MSD.EXE in DOS and pressing the C key. If you try to run MSD.EXE in Windows, you will be warned that the diagnostics will not perform an accurate test. Continue on with the diagnostics. If your serial chip is an 8250, stop right there *NetStorm Multiplayer* doesn't support it, nor do most other games. You'll need to get a serial port or modem with a 16550 serial chip. (The 16550 has special FIFO memory that makes it much less likely to lose data than the old 8250.)
2. What kind of modem is on each end (brand, model, speed, internal or external)?
3. On which port is your modem configured?
4. Is each modem configured correctly for your operating system?

5. Does Hyper Terminal (or any other terminal program) work with your modem? This is an easy way to test whether or not your modem is configured correctly.
6. At what speed are you connecting?
7. Are you using any data compression or error correction? (We do not recommend using either with the game.)

If you are using an external modem:

1. What kind of serial card is being used?
2. Do you have a seven-wire serial cable?

If you are on a LAN:

1. Can you see other computers on the network?
2. What is your network configuration?
3. What brand of network card do you have?
4. What network software are you running? What version number?

Activision Online Services:

Services with Activision Forums, E-Mail and File Library Support

America Online: Use keyword "Activision" to locate the Activision forum.

CompuServe: 76004,2122 or [GO ACTIVISION]

Activision BBS: (310) 255-2146 Up to 33,600 bps; Settings: 8 Bits, No Parity, 1 Stop Bit (8, N, 1)

Internet

<http://www.activision.com>

E-mail

support@activision.com

DirectX 5

During the *NetStorm* setup, the install process will ask if Microsoft DirectX 5 can be installed on your computer. If you accept, the Microsoft DirectX 5 setup program will install the appropriate files on your computer. If you choose not to install DirectX 5, and you find that later you need to install DirectX 5, follow these directions. With the *NetStorm* disc in your CD-ROM drive, install Microsoft DirectX 5 by right-clicking on the *NetStorm* CD icon to get the Context menu. From that menu, select Install DirectX.

Who makes DirectX and how can I contact them?

Microsoft created DirectX. If the answer to the question you are looking for is not found on this page you may want to contact Microsoft via mail at:

Microsoft Customer Sales and Service
One Microsoft Way
Redmond, WA 98052-6399, USA

Microsoft can also be reached in the USA at (800) 426-9400, or internationally at +1(206) 882-8080.

What is DirectX and why do I need it?

Microsoft's DirectX 5 is an API (Application Programming Interface) set that increases the speed at which games play under the Windows 95 operating system. These APIs allow direct access to the enhanced features of hardware under Windows 95. With DirectX 5, a program has instant access to the hardware, allowing for great advances in graphics, sound, video, 3-D, and network capabilities of games.

Since Windows 95 and DirectX 5 are relatively new in the computer world and have not achieved compatibility with some older video cards, many manufacturers are releasing updated drivers for Windows 95 to meet the DirectX standard. If you are not sure about your video card's compatibility, consult the company that makes your video card.

If the Microsoft DirectX Installer does not detect DirectX 5 on your computer, it can install DirectX 5 for you. After installation is complete, you will need to restart your computer in order for DirectX 5 to take effect.

If you have other Windows 95 games on your computer, chances are you already have an earlier version of DirectX installed on your computer. In this case, the Microsoft Installer will write over that version with DirectX 5. At that point, the DirectX installation process will be complete. You will need to restart your computer for the changes to take effect.

If you already have DirectX 5 installed on your computer, the Microsoft DirectX 5 installer will detect that and not overwrite any DirectX 5 files. You will not need to restart your computer after installation in order to run *NetStorm*.

DirectX 5 should not affect any titles designed for the original version of DirectX. Should you encounter difficulties with DirectX 5, please contact Microsoft for further information.

How do I check to see if my computer supports Direct X?

1. Place the disc in the CD-ROM drive and exit from any autoplay screens.
2. Double-click on "My Computer".
3. Right-click on your CD-ROM drive and choose Install DirectX.

If any of the components of DirectX are not certified, please call your hardware manufacturer for the updated drivers that support DirectX.

I am having problems with running NetStorm and I think it might be related to my Direct X installation. What should I do?

If you experience problems running *NetStorm*, try turning off the enable 3D acceleration option in the DirectX setup program. To disable 3D Acceleration, double click on the dxsetup icon located in Program Files\DirectX\Setup. Uncheck the option for 3D acceleration in the middle of the DX Setup window.

I have heard DirectX is not compatible with some video cards. What can you tell me about that?

Windows 95 and DirectX are relatively new in the computer world and have not achieved compatibility with some older video cards. Many manufacturers are releasing updated drivers to meet the DirectX standard. If you are not sure about your video card's compatibility, consult the [Vendor List](#) for the company that makes your video card.

If I don't have DirectX, will NetStorm install it for me?

Yes. If the Microsoft DirectX Installer does not detect DirectX on your computer, it will install DirectX for you. After installation is complete, you will need to restart your computer in order for DirectX to take effect.

If the DirectX Installer copied over a previous version, will the UnInstaller remove DirectX 5? How will this affect my other Windows 95 games?

DirectX 5 will remain on your computer and you will be able to run other Windows 95 games that use Microsoft's DirectX libraries. DirectX 5 should not affect any titles designed for the original version of DirectX. Should you encounter difficulties with DirectX 5, please contact Microsoft for further information (address and phone number stated above).

How do I restore my video and/or audio drivers once DirectX has been installed?

1. Place the disc in the CD-ROM drive and exit from any autoplay screens.
2. Double-click on "My Computer".
3. Right-click on your CD-ROM drive and choose Install DirectX.

Choose the button that satisfies your want (e.g. Restore Audio drivers). This process will install your past drivers and prompt you to restart Microsoft Windows.

If you are experiencing video card problems, please consult [Common Video Card Problems](#) for more troubleshooting tips.

Electronically Registering

There are two ways to access the registration for Windows 95:

- ® Select **Register Now** during the installation process.

- ® Right-click on the **NetStorm CD** icon with the disc in your CD-ROM drive and select **Electronic Registration** from the menu.

Finding Other *NetStorm* Multiplayers for Internet Play

With your Internet connection open, simply click "Multiplayer" from the main menu, then click "Connect". You will be transported to the *NetStorm* Multiplayer Challenge Arena where you can do battle against other players.

Full Screen Options

The following options are available through the Options Menu → Adjust Direct Draw, when running in Full Screen Mode.

[Remember, if you change a Full Screen/DirectDraw option and experience graphics problems or the game runs too slowly, you can always return to Window Mode by pressing ALT-ENTER.]

Safe & Slow Mode

This is the most widely accepted Direct Draw configuration, however, it can make the game run slower.

Safe & Jumpy Mouse

If your mouse cursor leaves "trails" on the screen, this option may correct that problem. However, this option may also cause your cursor to stick to one spot on the screen. We suggest that if your mouse is working fine, do not turn this option on. This option does not affect game speed. This option may be toggled on/off using the **F12** key.

Parallax Clouds

This option enhances *NetStorm's* illusion of height by making the clouds look distant. However, it can make the game run slower.

This option will automatically be disabled if *NetStorm* detects that your video card does not have enough video memory to support it. (Requires your video card to have at least 4MB RAM.)

Reduce Tearing

If the screen "tears" when scrolling in Full Screen Mode, you may wish to select this option. However, it can make the game run slower.

Full Screen Video Problems

We have found Full Screen video problems occur when you do not have 100% DirectX certification. In most cases you can fix this problem by updating your video card drivers. This is highly recommended and is usually free and easy to do. You can contact your Video Card Manufacturer for details.

Through our testing, we know this problem occurs with the following cards:

- Some Trident Video cards
Possible solutions:
 - a) Play in Window Mode by pressing ALT-ENTER.
 - b) Contact Trident for 100% DirectX certified drivers.

- STB Nitro 3D, using Vision95 desktop controls.
Possible solutions:
 - a) Install the STB driver without the STB Vision 95 display tools.
 - b) Play in Window Mode by pressing ALT-ENTER.

- #9 9FX Motion 771, using S3-Vision drivers.
Possible solutions:
 - a) Use the #9 drivers for Full Screen Mode. Drivers are available at <http://www.nine.com>.
 - b) Play in Window Mode by pressing ALT-ENTER.

Full Screen/Direct Draw Mode

Full Screen mode uses Direct Draw drivers to take advantage of your full screen size, and enables special features such as Edge Scrolling.

Full Screen Options

Parallax Clouds

Reduce Tearing

Safe & Slow Mode

Safe & Jumpy Mouse

Returning to Window Mode

Simulating Full Screen in 640x480 Window Mode

How do I start *NetStorm* Multiplayer?

Log on to your ISP, then start NetStorm. From the Main Menu choose **Multiplayer**.

Note: Because of the way Windows™ 95 works, it is best to always make sure your Internet connection is open before starting NetStorm. If it is not however, and you choose Multiplayer, *NetStorm* will launch your Internet Dialer.

The Multiplayer Options window will pop up:

- **Save Game:** You may name your game session here (this becomes useful for Local Area Network games).
- **Player Name:** You may give yourself a handle – this is the handle which other players in the multiplayer arena will know you as.
- **Server:** Clicking this button brings up a sub-menu of servers. You may change servers, or even add a server, but it is best to stick with the defaults unless you are having technical difficulties. (If you wish to add a server, you will need to fill in its DNS (server address), connection port number, and nickname.)
- **Find Local Server:** This option allows you to connect via local area network servers.
- **Connect:** Once you have set the above fields, click **Connect**. You will now descend into the Serenisphere (or Challenge Arena).

How to Start the Game

[How do I start the game?](#) - Basic instructions on how to begin playing the game.

[How do I start network game play?](#) - Basic instructions on how to begin playing the network version of the game.

I am having problems running the game with my STB video card.

We have experienced numerous problems with STB video cards running the STB Vision 95 set of display tools. Please install the STB driver without the STB Vision 95 display tools. If further information is needed, please refer to the video card manual or contact STB Systems, Inc. for instructions on how to change your video card driver.

I have an ATI Mach64 and keep getting errors (e.g. DIBENG.DLL). What should I do?

Please follow the instructions provided, for they will allow your video card to meet the requirements for certain video conditions.

- (1) Click the START button and select RUN.
- (2) Type in SYSEDIT and click OK.
- (3) Select the window that is titled SYSTEM.INI (e.g. C:\WINDOWS\SYSTEM.INI).
- (4) Within the window, scroll down until you find the following text. It should look like the following. If not, add the following missing parts:

```
[DISPLAY]
STRETCHENGINE=0
```

Make sure STRETCHENGINE is equal to 0 and not to 1.

- (5) Then select **File** from the pull down menu and choose **Save**.
- (6) Exit all windows and restart the system.

Information for *NetStorm* Multiplayer

NOTE: For your benefit, we have created a [Readme.doc](#) file that contains last minute information that could not be included in this on-line help file. If information is not found within this on-line help file, please view our [Readme.doc](#) file, as well as the game manual.

[Minimum System Requirements for *NetStorm* Multiplayer](#)

[How do I start *NetStorm* Multiplayer?](#)

[Finding Other *NetStorm* Players for Internet Play](#)

[Common Troubleshooting Tips for Playing *NetStorm* Multiplayer](#) - Where to go when you are having problems.

Check the Activision website at www.activision.com for information and updates on *NetStorm* Multiplayer. Please note that [Customer Support](#) for *NetStorm* Multiplayer is available via our online services only.

Installing & Uninstalling the Game

Before the installation

Installing *NetStorm* for Windows 95 - This contains install instructions and information about this version.

Electronically Registering

Uninstalling the Windows 95 version of the game - Basic instructions on how to uninstall the game.

Common Installation Problems - Problems that might be encountered before and/or after installation.

Installing the Game

How to Install

1. Before installing, close all other applications. Also make sure Virtual Memory (located in your System Control Panel under **Performance**) is *not* disabled.
2. Insert the *NetStorm* CD into your CD-ROM drive and wait a few moments until the *NetStorm* title screen appears. (If the title screen does not appear, please refer to the [AutoPlay](#) Troubleshooting section.)
3. Click the **Install** button to begin the installation process and follow the on-screen instructions.

NOTE: *NetStorm* has 2 install sizes. The game will play faster and smoother with the *maximum* install size. *NetStorm* can access game art and sound much faster from your hard drive than from your CD, so the more *NetStorm* files installed on your hard drive, the quicker the game will play.

If you choose *minimum* install, the CD is required to play single-player campaign missions. If you choose *maximum* install, you do not need the CD to play single-player campaign missions. To join a Multiplayer game, one CD is required for every two players.

4. After *NetStorm* installation is complete, you will be asked to install Microsoft's DirectX 5 drivers if you do not already have them. After installation of DirectX 5 is complete, you will need to restart your computer for the new drivers to take effect. For more information on DirectX 5, see the [DirectX 5](#) section of this file.
5. You can now run *NetStorm for Windows 95* by choosing **Start**→**Programs**→**NetStorm**→**NetStorm** from the **Start** menu or by clicking **Play** on the *NetStorm* title screen.

Internet

How can I get more speed out of my modem when on the Internet?

1. Upgrade your modem (applies to 14.4 users).
2. Turn off any software and/or hardware compression used by your modem.

I have both a TCP/IP Network adapter card and Modem adapter installed on my machine and I can't use my dial up account. What is wrong?

NetStorm Multiplayer might not see Internet games if you are dialing out to an Internet provider and your computer also has a TCP/IP compatible protocol installed for your network adapter card. You have to remove the TCP/IP protocol for your network adapter card before you will be able to use your dial up connection.

Minimum System Requirements for *NetStorm*

- 100% Microsoft Windows 95 compatible computer system (including compatible 32-bit drivers for CD-ROM drive, video card, sound card and input devices)
- Processor Type: Pentium 90MHz
- RAM: 16MB
- 15MB of uncompressed hard disk space
- 256 Color (640 x 480) VLB or PCI video card with 1MB RAM
- 100% Sound Blaster compatible sound card
- Double-speed CD-ROM drive (300K/second sustained transfer rate)
- 100% Microsoft-compatible mouse and driver

NOTE: The CD is required for single player play.

Additional System Requirements for Multiplayer:

- 100% 14.4Kbps Windows 95 compatible modem
- 100% Windows 95 compatible network (LAN)
- IPX network (LAN)
- TCP/IP network (Internet play)

NOTE: Under minimum install, the CD is required for multiplayer play. Under maximum install, one CD is required for every two players.

NOTE: English language version of Microsoft Windows 95 operating system is required.

NOTE: *NetStorm* uses new Microsoft DirectX 5 technology, and requires that your system have the most updated drivers that fully support DirectX.

NetStorm may have trouble working with some 1993 or earlier Matsushita CD-ROM drives. These CD-ROM drives have trouble reading beyond 63 minutes on CDs, and *NetStorm* uses the full CD. These drives were sold under the names of Panasonic, JVC, Reveal, Creative Labs and Plextor. Gameplay may occasionally slow down and the CD-ROM drive will be accessed constantly. We highly recommend that you upgrade to a newer CD-ROM drive to avoid problems with other programs in the future.

[Click here](#) if you have a NexGen Pentium compatible processor or [click here](#) if you have a Cyrix 686 processor and are receiving a warning message during the install process.

Alt-Enter can be used at any time to toggle from Full Screen Mode to Window Mode.

Simulating Full Screen in 640x480 Window Mode

If your resolution is set to 640x480, then running in Window Mode will simulate Full Screen/DirectDraw. This will also enable the "Edge Scroll in Full Screen" feature.

Starting the Game

After installing the game, choose the **START** button and select **PROGRAMS**. Click on **NetStorm** and choose **NetStorm**. You can also start the game by inserting the NetStorm CD into the CD-ROM drive and choosing **PLAY** from the splash screen.

Supported Operating Systems

This game supports one operating system at this time: Microsoft Windows 95.

The following operating systems are not supported:

MS-DOS 6.22

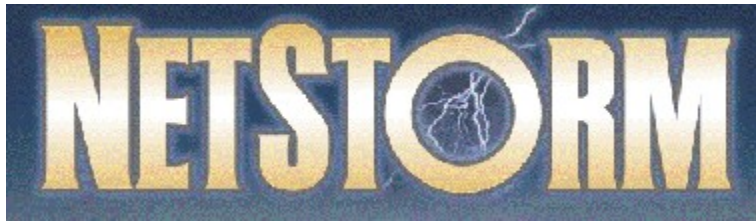
MS-DOS Mode 7.0

Microsoft Windows 3.1X

Microsoft Windows NT

IBM OS/2 (All Varieties)

Table of Contents



NOTE: For your benefit, we have created a [Readme.doc](#) file that contains last minute information that could not be included in this on-line help file. If information is not found within this on-line help file, please view our [Readme.doc](#) file.

System & Setup Requirements

Installing & Uninstalling the Game

How to Start the Game

Game Play - The on-line players manual.

Information for NetStorm Multiplayer

Common Troubleshooting Tips - Where to go when you are having problems with the game.

Vendor List - A directory of hardware/software companies for compatibility issues.

Activision Customer Support - Information about our support services.

Credits - The people who made this game possible.

Taskbar Always on Top

In order to launch *NetStorm*, the Windows 95 taskbar cannot have the option Always On Top selected.

For directions on how to turn this option off, please see the Microsoft Help system. [Click Here](#) to display the Microsoft Help system subject on Configuring the Taskbar.

The taskbar hides a portion of the game window. Can I fix this?

This can happen if your taskbar is always on top. You can hide the taskbar by right-clicking on it and selecting **Properties**. Click **Auto Hide** and then **OK**. The taskbar will hide when it is not used. To make the taskbar reappear, place your mouse in the area where the taskbar once was and it will appear.

Uninstalling the Game

How to uninstall *NetStorm*.

The Uninstall option in *NetStorm* allows the game to remove itself completely from your hard drive. From the **Start** button, go to **Programs**→**NetStorm**→**Uninstall NetStorm** and follow the Uninstaller instructions.

NOTE: You should always uninstall the game with the Uninstaller provided.

If you remove the game from your hard drive by dragging your *NetStorm* folder to the Recycle Bin, certain files may be left behind causing problems with a later reinstallation of the game. Should this occur, completely remove all *NetStorm* files from your computer and complete the following steps:

1. Make sure you have deleted the entire directory to which you installed *NetStorm*.
2. Remove *NetStorm* from the **Start** menu.
 - a. From the **Start** button, go to **Settings**→**Taskbar**.
 - b. Select the **Start Menu Programs** tab.
 - c. Click the **Remove** button.
 - d. Highlight and then delete the entire ***NetStorm*** entry.
3. You must also clean up the Windows 95 Registry in order to be able to reinstall *NetStorm* again.
 - a. Go to the **Start** menu on your taskbar. Select **Run**.
 - b. In the Run dialog box, type **REGEDIT** and click on the **OK** button.
 - c. Once REGEDIT is open, double-click the entry called **HKEY_LOCAL MACHINE**.
 - d. Double-click on **SOFTWARE**.
 - e. Open the Titanic Entertainment folder and delete the ***NetStorm*** folder.

When I launch into a mission, the screen goes black and freezes.

We have found this to be the case when you do not have DirectX certification. In most cases you can fix this problem by updating your video card drivers. This is highly recommended and is usually free and easy to do. You can contact your Video Card Manufacturer for details.

Another possible cause could be that the CD is not in the CD-ROM drive. Please insert the *NetStorm* CD before you attempt to start the game.

Why do I have wavy lines across my screen when I enter a mission?

We have found this to be the case when outdated DirectX drivers are present on a system. This can be fixed by updating your video card drivers. This is highly recommended and is usually free and easy to do. You can contact your Video Card Manufacturer for details.

Why does the game sometimes quit to the desktop?

Occasionally, *NetStorm* will suddenly quit to the desktop. This may be the result of a conflict with the EZDesk desktop utility, which is used to organize icons on your desktop. Disable EZDesk whenever playing *NetStorm*.

The game may also suddenly minimize to the taskbar if you are running an electronic mail program (e.g. MS Exchange) in the background. Quit all applications before playing *NetStorm*.

